

HUNTINGTON BEACH PUBLIC LIBRARY
7111 Talbot Avenue
Huntington Beach, CA 92648

For Reference

Not to be taken from this room



HUNTINGTON BEACH NEWS
DAILY CITY PAPER, HUNTINGTON BEACH, CAL.
Subscription \$1.50 per year. Payable in Advance
Postoffice at Huntington Beach, Cal., as second-class matter.
JAMES J. CONRAD, Editor and Owner.
HUNTINGTON BEACH, CAL., FRIDAY, JUNE 12, 1914

WEEKLY GREETING.

His power is the same throughout the universe. It is not a little more stress in this place—a weaker that—but it is a uniform force eternally sustained. His Principle is perfection, never so much as a jot before His work is perfect. He alone has all-power, with His loving presence, and holds the key of all life or science.

PRESIDENT WILSON SUSTAINED.

Information furnished by the New York World shows 135 leading newspapers in the United States supporting President Wilson in his fight for the repeal of the tariff. One to read two of the big Los Angeles dailies to think that there were not a respectable newspaper in the country in sympathy with the President in this important question.

Little doubt but what time will convince most fair-ones that President Wilson's stand on this question has his action on every question of importance assumed the great responsibility of director general of the world. Many who regret his attitude on the equal suffer-ings, but as that is one that can and will be solved by the states without the aid of any one citizen, either public or private, his failure to endorse it need not be considered an error to the universal adoption of this just law.

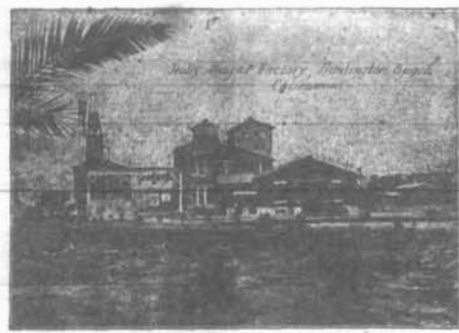
TIME EARLIER IN CLEVELAND NOW.

Standard time was established by the railroads for the first time in 1883. The United States extending from 65° west longitude is divided into four time sections, each of which is equal to exactly one hour, commencing at the 75th meridian. Eastern time, includes all the territory between the Atlantic coast and an irregular line drawn from Detroit, Mich., to the Gulf of Mexico, the latter being its most southern point. The central time, includes all the territory between the Atlantic coast and an irregular line from Bismarck, N. D., to the Rio Grande. The third, or Mountain time, includes the territory between the last named line and nearly the western boundary of the states of Idaho, Utah, and Arizona. The fourth, or Pacific time, includes the rest of the country, to the shores of the Pacific.

Standard time is uniform inside each of these sections and each section differs from the one next to it by exactly one hour. Thus at 12 o'clock noon eastern time at New York is 11 o'clock a. m. at Chicago, central time, is 11 o'clock a. m.; at San Francisco, Pacific time, is 10 o'clock a. m.; at San Francisco, Pacific time is 16 minutes slower at Boston than true local time.

to 1400 tons daily, and disburses to farmers and growers of the Huntington Beach district over \$800,000 annually. The annual output, ranging between 30,000,000 and 35,000,000 lbs. of pure white sugar, in every respect equals the best cane sugar manufactured. Some idea of the enormous business transacted by this model concern may be conceived when the statement is made that about 6000 cars of freight are received and forwarded each year, an average of 500 cars per month, with freight earnings of more than \$300,000 annually; about 60,000 barrels of fuel oil being required in the yearly operation of the plant, and about 10,000 tons of lime rock.

The municipal pier to be dedicated June 20 and 21, is one of the longest concrete piers on the Pacific Coast, and according to many high authorities who have viewed this magnificent structure is actually the most splendidly designed pier ever built. The exact length of this "Pride Of The Pacific", is 1316 feet, being only four feet short of a quarter of a mile. The design of the pier being entirely different from any similar structure in existence, it must necessarily be seen to be fully appreciated. The body of this fine pleasure structure rests on 208 concrete piles,



ranging in length from 38 to 64 feet; the longer ones weighing 20,700 pounds each; the caps resting on each of the piles weigh 5 tons each, and are 12x24 inches. The pier is divided into sections by two tees or wider places, a portion of which is slightly elevated above the floor. The first tee from the entrance being 45x50 feet, the second 45x75, and there is one at the outer end with a level floor 68x75 feet; the width of the main structure the entire length, being 25 feet. The floor is a combination of timber and cement; the wood being Washington fir, three pieces 6x14; 16 lines of 3x14; 2x4 bridging at third point; the flooring being 2x12, and upon this timbered structure rests a concrete wearing surface, 4 1/2 inches in thickness in the center and 3 inches at the sides; making the average thickness about 3 1/2 inches, this being reinforced by 1/4-inch steel, 18-inch centers spaced both ways. The pier is lighted with 34 16-inch

globes, mounted on ornamental concrete posts. The bond covering the cost of this pleasure structure was for \$70,000. The pier could not be duplicated for that sum of money, as contractors admit they would not build another one for any like that amount of money. The pier was designed by E. J. Rothenberg, now in Germany, and constructed by the Merce Bridge & Construction Company of Los Angeles. Work was begun April 15, 1913 and completed May 1, 1914.



The next in line is the big factory of the Pacific Oilcloth Linoleum Co., now in course of construction near the sugar factory. The main factory building is 66x336 feet and will be used for the manufacture of oilcloth, being the only one of the kind west of St. Louis, and will represent an investment of at least \$60,000 when ready for operation.

The concern is being financed by prominent local capital and will probably be in operation some time in July, and will be a big factor in the up-building of Huntington Beach.



The Carnegie public library recently completed, while not so commodious as found in larger places, is very conveniently arranged for such purposes and is indicative of a progressive community.

GOOD LAND CHEAP
SOUTHERN CALIFORNIA FARMS COMPRISING
50,000 ACRES
FREMONT VALLEY