



## Memorandum

---

**To:** Josie McKinley  
**From:** Graham Juby/Susanna Li  
**Date:** October 11, 2004 **WO#:** 6048A.07  
**Subject:** Poseidon - site investigation

---

Per your request, Carollo Engineers conducted a preliminary investigation of available land (5 acre areas) within a 2-mile radius of the AES Power Plant in Huntington Beach. Open areas were identified within the 2-mile radius using aerial photographs and information from the City of Huntington Beach website.

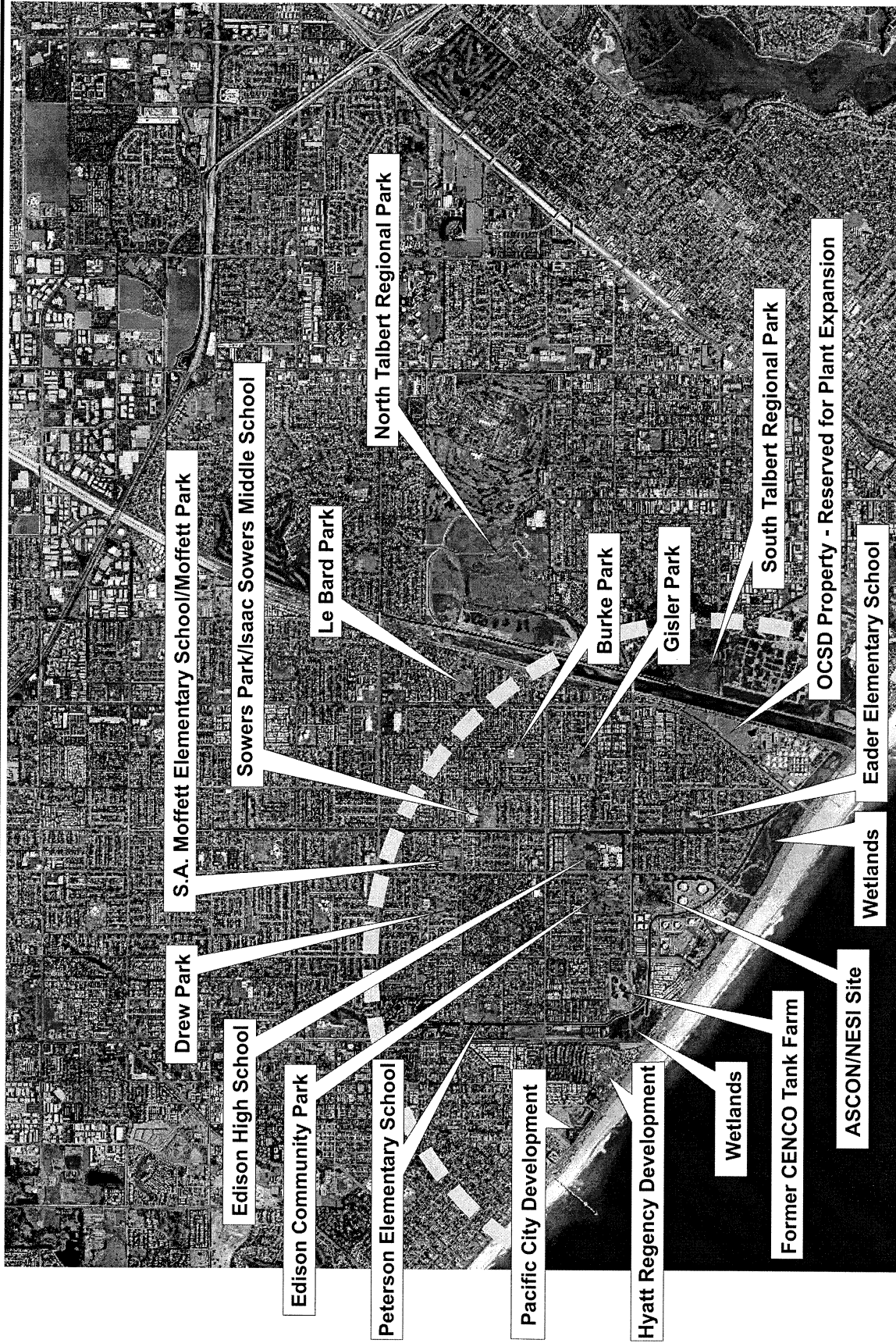
As shown in Figure 1, most of the open areas are parks and schools within the community. There are total of eight parks identified in the 2-mile radius, and most are less than 5-acres in size. In addition, there are five schools, located in close proximity to the identified parks. Other open areas include: wetlands, OCSD property (reserved for future plant expansion) and the ASCON/NESI site (40 acres). The ASCON/NESI site is a highly contaminated piece of property and is currently under DTSC review for clean-up; therefore this is not a viable alternative for the desalination project. There are three open areas shown to the northwest of the AES Power Plant. However, all three sites are taken. One of the sites is the former CENCO tank farm (25 acres), for which an entitlement application is in process for construction of 200 homes. The remaining two sites include the new Pacific City development located west of Beach Boulevard, and the new Hyatt Regency Huntington Beach Resort and Spa located east of the Lake Avenue.

According to the City of Huntington webpage, only three of the parks identified in Figure 1 are larger than 5 acres and they are listed below:

- Gisler Park, 11 acres
- LeBard Park, a little over 2 miles from AES, 5 acres
- Talbert Regional Park, (the North part of the reserve is 99.1 acres, the South part of the reserve is 88.5 acres).

Figure 2 shows the locations of the above three identified parks, marked with the 2-mile radius boundary from the AES Power Plant.

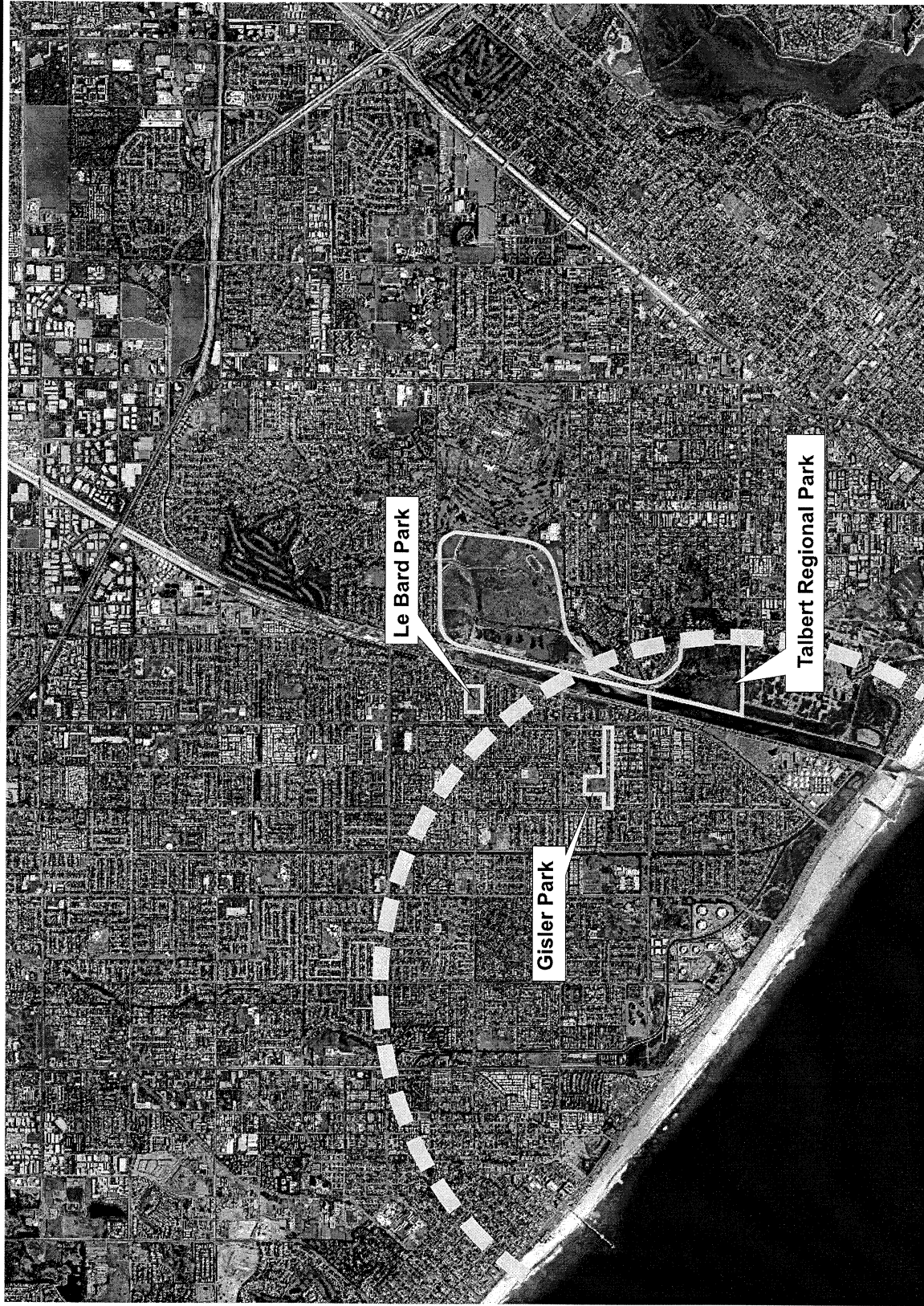
If you have any questions, please feel free to contact us.



OPEN AREAS WITHIN 2 MILES  
RADIUS OF AES POWER PLANT

FIGURE 1





OPEN AREAS GREATER  
THAN 5 ACRES

FIGURE 2