

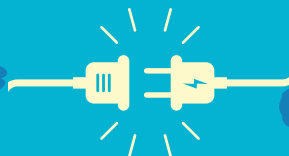


Help prevent fires

e-bike battery safety checklist



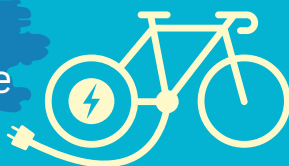
Always read instructions for handling e-bike battery



Unplug once battery is done charging



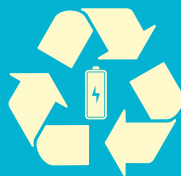
Never use extension cords when charging the battery



Try to charge in an outdoor place, or away from an exit



Never charge your e-bike battery overnight or unattended



Properly dispose of batteries at Household Hazardous Waste Center

RIDE SAFE

